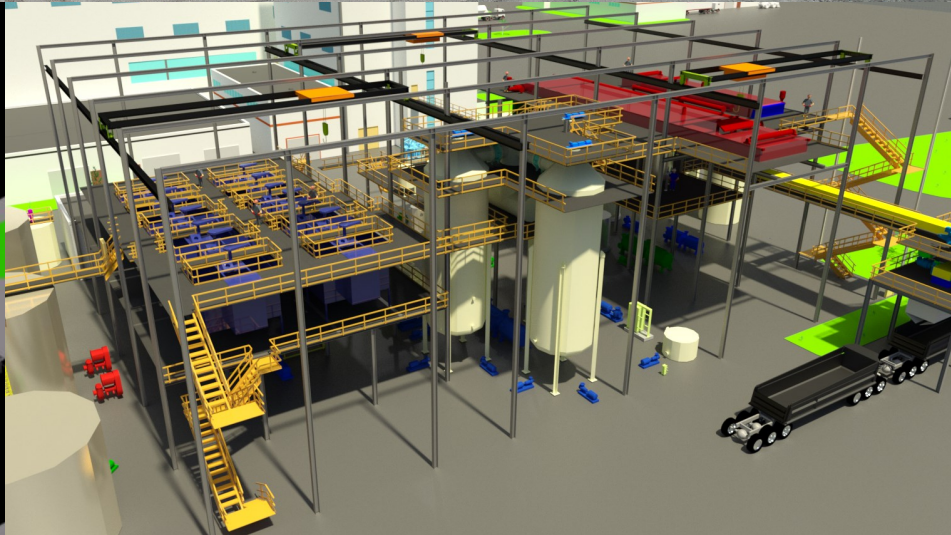


Sevier Playa SOP Project

Millard County, UT, USA



Located in Millard County Utah, USA, the Sevier Playa Potash Project aims for the production of 300,000 metric tonnes of Sulfate of Potash (SOP) per year utilizing the salt-rich brine of the Sevier Lake Playa. By digging trenches, ground brine is extracted from the Playa and sent to evaporation and harvest ponds, where crude potassium sulfate salts are deposited. The salts are later harvested and sent to the Processing Plant for refining and the production of SOP.

Upon completion of the Feasibility Study, NOVOPRO has been mandated to a leading role in the Front End Engineering Design (FEED) take including all process testwork, completing the Playa constructability and geotechnical programs, as well as completing the Basic Engineering for the Playa, Product Rail Loadout, and Processing plant.

CLIENT

Crystal Peak Minerals Inc.

LOCATION

Millard County, UT, USA

YEAR(S)

2016 to Present

COMPLETED PHASE(S)

- Pre-Feasibility
- Feasibility

CURRENT PHASE

- FEED (Bridge) Engineering

CRYSTAL PEAK MINERALS INC.